

Women's Leadership Counts

4th Annual Conference

Talent Innovation: Going Beyond Unconscious Bias to Lead Generational Diversity

Moderator

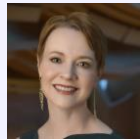


RENEE WHITE FRASER, Ph.D.
Founder & CEO, Fraser Communications

Keynote Speakers



KAY IWATA
Founder & President, K. Iwata Associates, Inc.



RACHEL MOORE
President and CEO, The Music Center

Thursday, November 2, 2017

2:00-2:30pm Registration | 2:30-6:00pm Program

6:00-7:00pm Networking Reception

**InterContinental Los Angeles Century City
at Beverly Hills**

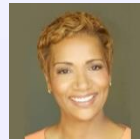
2151 Avenue of the Stars, Los Angeles, CA 90067

\$60 Members | \$75 Non-Members |
\$115 Admission *plus* NEW one year JASSC
Individual Membership (\$75 value)

Register at www.jas-socal.org/Women or
call 310-965-9050 ext. 104

*Reservations cancelled less than 48 hours before the event
will be billed to the reserving party.*

Panelists



BONNIE BOSWELL
Executive Producer/Reporter



ADRIANA ROMERO
Solutions Marketing Manager, Industrial IoT,
Hitachi Insight Group



MIKE SEBRING
Director of Inclusion and Diversity for the Americas,
MUFG Americas

About the Program

At a time when companies have workforces which can include up to 5 different generations, how do successful leaders maximize the talents of these very different generations? To lead across generations, leaders must understand what makes each generation unique and how unconscious bias may create blinders. When you add into the mix how technology is changing at such a fast pace, it is more important than ever to facilitate sharing, incorporate new views and foster creativity.

Join us to learn how effective leaders are innovating with their talent across generations.

The program will include keynote speakers, panel discussion, and interactive table discussions. The networking reception will provide opportunities to connect with speakers and attendees from a broad range of industries.

Who Should Attend

Current and future corporate, business, academic, non-profit and entrepreneurial **women and men** leaders who value the U.S.-Japan collaboration and wish to expand their networks.

Presenting Partner



Global Organization for Leadership and Diversity

Conference Sponsors



Cooperating Organizations Asian American Professional Association, California and Los Angeles Diversity Council, Koyamada International Foundation, Los Angeles Latino Chamber of Commerce, National Association of Women Business Owners LA, Women in International Trade - LA, Women Lawyers Association of LA