



Japan America Society of Southern California

presents

# Women's Leadership Counts



## ***Talent Innovation: Going Beyond Unconscious Bias to Lead Generational Diversity***



### **FACT SHEET**

#### **Women's Leadership Counts Initiative**

In 2014, the Japan America Society of Southern California's Women's Leadership Counts Initiative (WLCI) was created as a first-of-its-kind initiative to provide a platform for women in business on both sides of the Pacific to engage in professional and leadership development.

Together with our partner organizations, business executives and community leaders, the WLCI will create a network that inspires action and moves the needle on women's leadership.

#### **Talent Innovation: Going Beyond Unconscious Bias to Lead Generational Diversity**

At a time when companies have workforces which can include up to 5 different generations, how do successful leaders maximize the talents of these very different generations? To lead across generations, leaders must understand what makes each generation unique and how unconscious bias may create blinders. When you add into the mix how technology is changing at such a fast pace, it is more important than ever to facilitate sharing, incorporate new views and foster creativity. Can technology help to facilitate harmony and communications in work environments that include multiple generations and cultural gaps? Join us to learn how effective leaders are innovating with their talent across generations.

#### **4<sup>th</sup> Women's Leadership Counts Annual Conference**

**Date** Thursday, November 2, 2017

**Time** 2:30pm – 6:00pm Conference, 6:00pm – 7:00pm Networking Reception

**Venue** InterContinental Los Angeles Century City at Beverly Hills (Los Angeles, CA)

**Admission**

Individuals        \$60 Members, \$75 Non-members  
Table Sponsors    \$600 Members, \$750 Non-Members

**Who Should Attend**        Current and future corporate, business, academic, non-profit and entrepreneurial *women and men* leaders who value the U.S.-Japan collaboration and wish to expand their networks.

**Why You Should Attend**

- **LEARN from global leaders** - Understanding the culture of the parent company, management, or client from Japan or overseas is key to having a successful career
- **DISCOVER your potential** - Build leadership and management skills and navigate through unique corporate culture in a professional environment
- **INVEST in yourself** – Exchange ideas as well as challenges you are facing with peers and mentors, and learn tactics to advance your career
- **BUILD your professional network** – Meet a diverse group of women and men representing a wide variety of industries

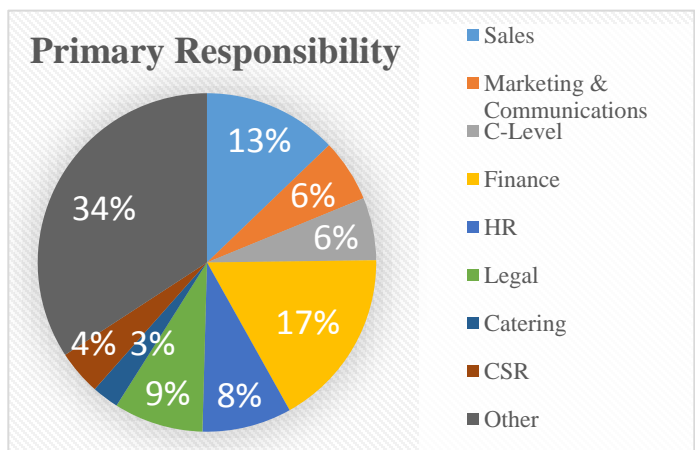
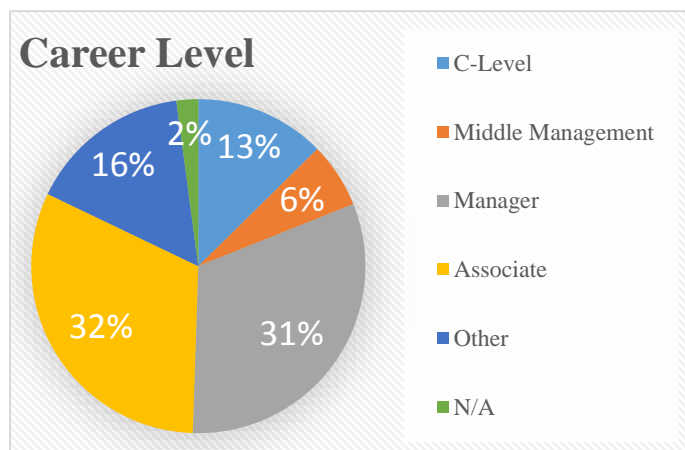
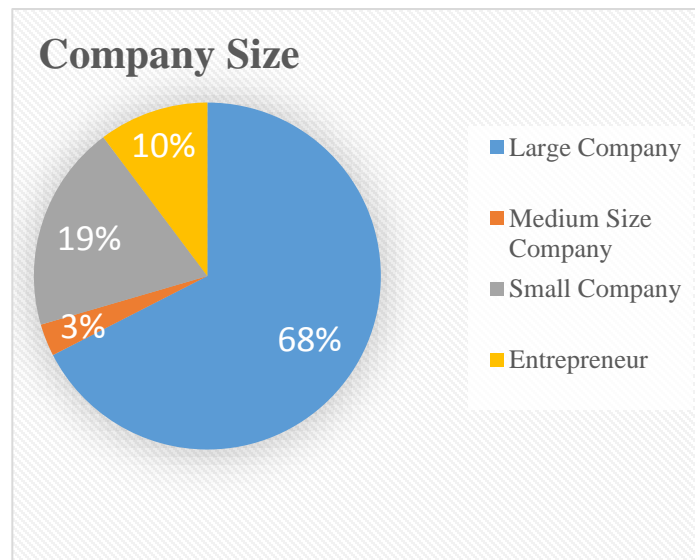
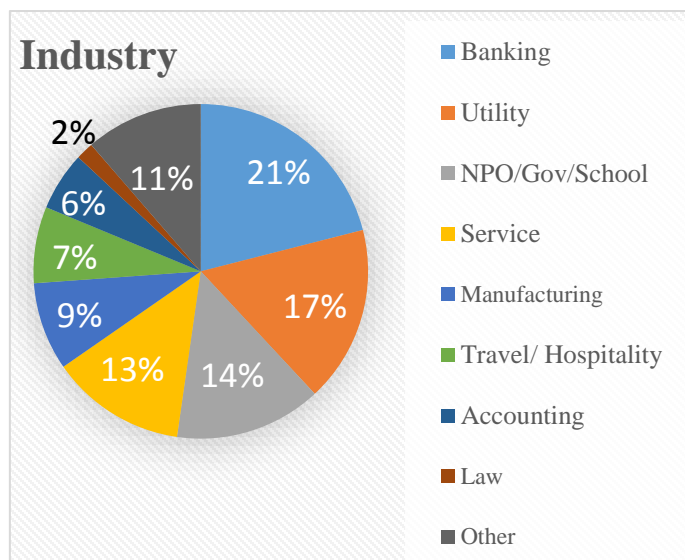
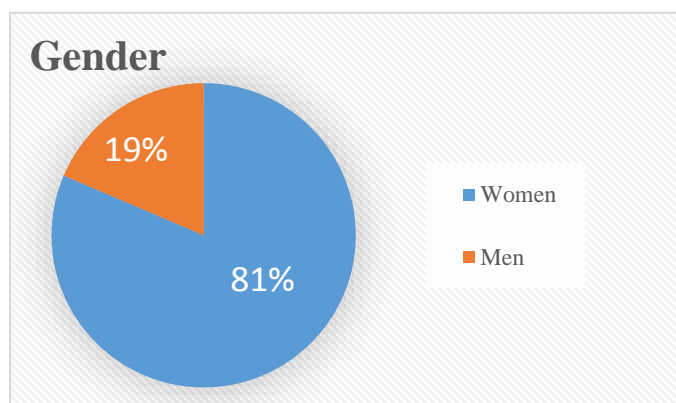
**More Information**    [www.jas-socal.org/Women](http://www.jas-socal.org/Women)

**About Japan America Society of Southern California**

JASSC is a membership organization founded in 1909 to build economic, cultural, governmental and personal relationships between the people of Japan and America. It has grown to become the West Coast's premier educational and public affairs forum dedicated to the U.S.–Japan relationship. It is also the second largest of thirty-seven Japan America societies in the United States. JASSC is a qualified 501(c)(3) nonprofit, charitable and educational organization and it is supported by 140 Japanese and American corporate members and more than 2,000 individual members. [www.jas-socal.org](http://www.jas-socal.org)  
(Tax ID 95-2021853)

# Women's Leadership Counts

## 2016 Annual WLC Conference DEMOGRAPHICS



## Women's Leadership Counts Conference Past Speakers

(Titles indicate position at the time of participation)



**Michiko Achilles**

Managing Corporate Officer, Vice President and Head of Human Resources  
SAP Japan Co., Ltd.



**Betsy Berkhemer-Credaire**

President  
Berkhemer Clayton, Inc.



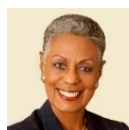
**Ellen Chen**

Co-Founder & President  
Mendocino Farms



**Maria Faillace**

Executive Vice President of Production  
CBS Films



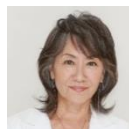
**Bonnie G. Hill, Ed. D.**

President, B. Hill Enterprises LLC  
Lead Director, Board of Directors, The Home Depot, Inc.  
Director, AK Steel Holding Corporation, California Water Service Group, The Rand Corporation and Yum Brands, Inc. (KFC, Taco Bell, Pizza Hut)



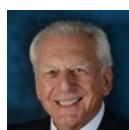
**Mari Miyoshi**

President, Sumitomo Realty and Development U.S.A.  
Owner of InterContinental Hotel Los Angeles Century City *at Beverly Hills*  
President, Sumitomo Fudosan Hotel Villa Fontaine Co., Ltd. Japan



**Yoko Narahashi**

President, United Performer Studio  
Producer, Director, Casting Director and Lyricist



**Robert A. Rivero**

CEO, RAR Management Services LLC  
Retired National Senior Partner, KPMG LLP



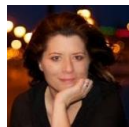
**Kaori Sasaki**

Founder & CEO, ewoman, Inc.  
Founder & CEO, UNICUL International, Inc.  
Founder and Chair, International Conference for Women in Business



**Rona Tison**

Senior Vice President, Corporate Relations  
ITO EN (North America) INC.



**Kelly Keenan Trumpbour**

Founding Venture Partner, NextGen Venture Partners  
Founder, See Jane Invest



**Julia Wada**

Group Vice President, HR and Business Technology Solutions,  
Toyota Financial Services  
Director, Japan America Society of Southern California



**Renee White Fraser, Ph.D.**

Founder & CEO  
Fraser Communications